

SCANSONIC

Dantax Radio A/S
Bransagervej 15
9490 Pandrup
Denmark
Tel. +45 98 24 76 77

www.scansonic.dk

SCANSONIC **HD**



Having worked with Raidho speakers for more than 12 years, I found myself faced with a completely new challenge when I was asked to design a new range of high-performance speakers for the Scansonic brand.

From the start, I was very focused on building on all the experiences and strengths obtained from designing the Raidho speakers. At the same time, I also had to be aware of the long heritage and the Nordic design tradition of the Scansonic brand. This time, the task also came with a budget and a desire to create the very best possible within financial limits. It was clear to me from the very beginning, that some core techniques from the Raidho speakers would be of importance: The speakers had to be designed around a ribbon tweeter that works with a super lightweight diaphragm that is sealed around the edges to allow for a seamless transition to the midrange region.

Furthermore, they needed to be designed and developed with a speaker driver with a ridged, piston-type membrane. Developing and building these speakers in Denmark has been a tremendous task with quite a long duration, I am very glad that a fantastic team effort made it possible - the result makes me proud.

Michael Børresen



WEIGHT LOSS FOR RESOLUTION TRANSIENTS AND SUPERB LEADING EDGES

The MB ribbon tweeter has a membrane with an extremely low mass. It is formed by a Kapton-aluminum sandwich that is only 20 um thick, and the resulting mass is app. 0.03 g., which is approximately 50 times less than any conventional textile, ceramic, beryllium or diamond dome. The lower mass translates directly into higher resolution and less material coloration.

WEAVED CARBON CONES FOR STIFFNESS AND LOW COMPRESSION

For the MB-series, we have developed a ridged, dustcap free, carbon membrane. By carefully optimizing the shape and stiffness, we have succeeded in making a very quiet woofer that blends beautifully with the ribbon tweeter. The woofer has an overhung magnet system, with long linear stroke and excellent bass performance.





The MB-1 is a stand-mount, two-way mini monitor. Our main goal was to create a small speaker that does what it does really well. The reflex port is placed in the front, and it uses special inlays that reduce noise to an extremely low level. While the speaker is small and stylish, the music performance is lively bright and bold, with a bass performance that defies its compact size. The speaker is front-ported to allow for placement near the rear wall.

For the MB-1 we have a dedicated stand, with MB-series matching aluminum adjustable feet. The MB-1 also fits the X-1 stand.

- a small speaker that does what it does really well



The MB-series features the same good solid, two-way binding post. The feet are machined from aircraft quality aluminum and can be adjusted to level the speaker. For added rigidity, we have added a carbon sheet to the top panel; this, paired with extensive internal bracing, makes the cabinet inert and silent.





The MB 2.5 has a solid foundation in the Nordic design tradition.

It is simple, sleek, elegant and visually square when seen directly from the front, and curved and organic when seen from an angle.

The rounded edges of the cabinet reduces diffraction and minimizes the sonic imprint on the frequency response.

It does not matter if your home is modern or classic, the timeless design of the MB-2.5 will fit in any home.

The MB-2.5 is a slim floorstander with two 4.5" carbon-coned drivers and a sealed ribbon tweeter.

The MB-2.5 is a 2.5-way speaker with the second woofer assisting in the power demanding bass region.

The 2.5's cabinet is heavy, braced and curved, with carbon reinforcements. The speaker is crossed over at 3.5 kHz, and the second woofer assists up to 200 Hz.

- the timeless design of the MB-2.5 will fit in any home



MB-Center

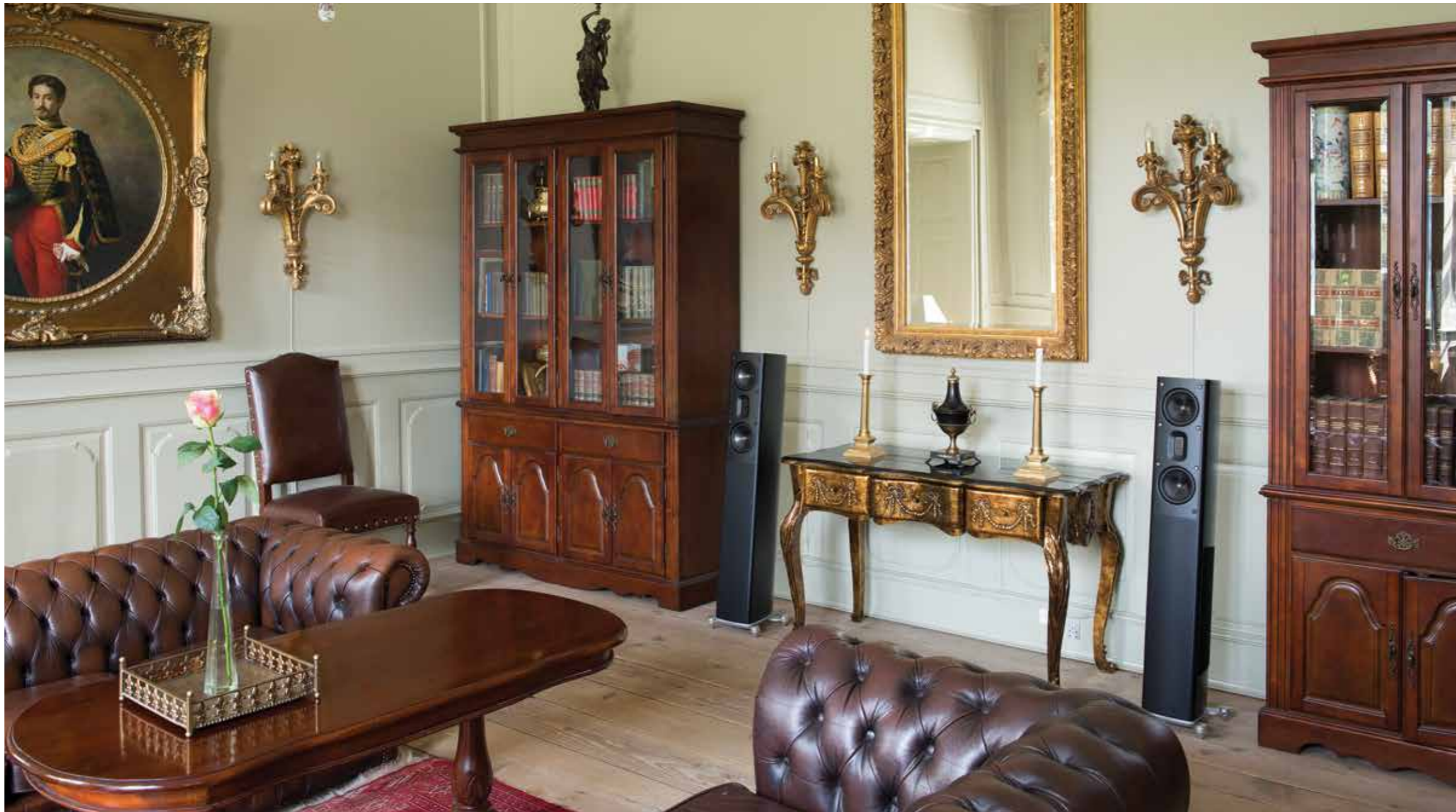
The MB-Center is a high performance center channel for a MB home theatre setup. The MB-Center is like the other MB series speakers built around the amazing MB sealed

ribbon planer tweeter. This allows for a stress-free, dynamic and detailed treble presentation.

The main focus on the center speaker has been the frequency range where diction of speech is dominant. Target has been To present the vital area clean and as articulated as absolutely possible.

The MB-Center has the same dynamic driver section as the MB-2.5 which gives the MB-Center a large dynamic scale and limitless headroom.





The MB-3.5 is a slim floorstander with two 4.5" carbon-coned drivers, a sealed ribbon tweeter and two 6.5" woofers. The MB-3.5 works as a 2.5-way speaker, where the two midrange-woofers are supported by two 6.5" aluminum coned woofers.

The two carbon midrange-woofers are run in series for increased power handling.

The MB-3.5 cabinet is heavy, braced and curved, with carbon reinforcements. The speaker is crossed over at 3.5 kHz and the two added side woofers assist up to 200 Hz.

- carefully tailored to linearize frequency region



The MB-series features high quality crossover with top quality components and a complete cable harness from Ansuz Acoustics. The filter has been carefully tailored to linearize the frequency region where cone and cabinet geometry play a role and also to carefully tune the speaker to a natural sounding frequency response.



MB-6 | Slim floorstander



The MB-6 is the Scansonic flagship speaker. Tall, slim and elegantly curved it follows the core of traditions in Danish loudspeaker design.

The design is centered around the ultra light moving mass sealed ribbon tweeter, that has unique speed, resolution and dynamic transient capability. This makes for a very transparent and highly detailed reproduction of the finest details in the program material.

The tweeter is crossed over to dynamic driver array at 3 KHz.

The MB-6 boasts a powerful lineup of 6, 4,5" carbon coned dynamic drivers, arranged in a power sharing line array.

The inner pair of the driver covers the midrange up to where the tweeter takes over and as you move out from the center the driver covers more and more of the lower registries.

In the deepest bass the line array boast a total membrane area larger than a 12" driver, but still with the speed and agility of the smaller drivers. This makes the MB-6 have outstanding capabilities even in the deepest bass.

The MB-6 is an incredible music performer with an impact an authority the will leave you breathless.





The M-5 speaker is a compact, two-way, stand-mount mini-monitor. The speaker is designed around an ultralight ribbon planar tweeter and a paper-polypropylene compound bass-midrange driver membrane. The speaker is crossed over at 3.5 KHz with a second order filter.



The M-6 is a compact, 2.5-way, floorstanding speaker. The speaker is designed around an ultralight ribbon planar tweeter and two paper-polypropylene compound bass-midrange drivers. The bass driver assists up to app. 300 Hz for added bass capability. The speaker is front ported in the bottom and is crossed over at 3.5 kHz with a second order filter.





The M-9 is a 3-way floorstanding speaker. The speaker is designed around an ultralight ribbon planar tweeter and two paper-polypropylene, compound midrange drivers with a side-mount 8" bass driver for the lowest frequencies. The speaker is front ported in the bottom and is crossed over at 3.5 kHz and 300 Hz with second order slopes.



The M-8 Subwoofer has a powerful 100 W RMS built-in amplifier and the adjustable crossover frequency, and phase angle enables you to seamlessly combine the M-8 with any existing stereo or surround setup.





The M-5 BTL speaker is a compact, two-way, stand-mount mini-monitor. The speaker is designed around an ultralight ribbon planar tweeter and a paper-polypropylene compound bass-midrange driver membrane.

The speaker is crossed over at 3.5 KHz with a second order filter. The M-5 BTL is active with 2.4GHz aptX streaming capability and four direct-wired and digital inputs. The speaker is wireless and has a powerful, 50W, class-AB amplifier built in.



LEARNING

For the The M-5 BTL, we have opted for learning function. The learning function means that the speaker is capable of learning the codes from your existing remote control. There are several good reasons as to why we selected the aptX, 2.4GHz wireless data transmission system for our powered and wireless speakers.

- full CD quality data transfer capability

If you device supports aptX, you will not only benefit from the very good audio properties with full CD quality data transfer, you will also benefit from the unique feature that aptX connects directly to your device. On the contrary, our wireless speakers work with any Bluetooth device, even if they are not aptX compatible. Another great feature of aptX is that it also connects directly between devices. This means that the streaming data connection through your home Wi-Fi system is not congested with the audio data stream to the speakers.

The active Scansonic BTL speaker models also have two RCA/PCM wired inputs and optical TOS-link input.

For the amplifier we have chosen to work with the high performing class-AB amplifiers to ensure the best latency. To ensure better timing between channels, we have chosen to transmit the wireless data to just one speaker where the amplifier driving both channels is placed.





The M-6 BTL speaker is designed around an ultralight ribbon planar tweeter and two paper-polypropylene compound bass-midrange drivers. The bass driver assists up to app. 300 Hz for added bass capability. The speaker is front ported in the bottom and is crossed over at 3.5 kHz with a second order filter. The M-6 BTL is active with 2.4GHz aptX streaming capability and four direct-wired and digital inputs. The speaker is wireless and has a powerful, 60W, class-AB amplifier built in.



LEARNING

For the The M-6 BTL, we have opted for learning function. The learning function means that the speaker is capable of learning the codes from your existing remote control. There are several good reasons as to why we selected the aptX, 2.4GHz wireless data transmission system for our powered and wireless speakers.

- high performing Class AB amplifier

If your device supports aptX, you will not only benefit from the very good audio properties with full CD quality data transfer, you will also benefit from the unique feature that aptX connects directly to your device. On the contrary, our wireless speakers work with any Bluetooth device, even if they are not aptX compatible. Another great feature of aptX is that it also connects directly between devices. This means that the streaming data connection through your home Wi-Fi system is not congested with the audio data stream to the speakers.

The active Scansonic BTL speaker models also have two RCA/PCM wired inputs and optical TOS-link input.

For the amplifier we have chosen to work with the high performing class-AB amplifiers to ensure the best latency. To ensure better timing between channels, we have chosen to transmit the wireless data to just one speaker where the amplifier driving both channels is placed.





The M-9 BTL is designed around an ultralight ribbon planar tweeter and two paper-polypropylene, compound midrange drivers with a side-mount 8" bass driver for the lowest frequencies. The speaker is front ported in the bottom and is crossed over at 3.5 kHz and 300 Hz with second order slopes. The M-9 BTL is active with 2.4GHz aptX streaming capability and four direct-wired and digital inputs. The speaker is wireless and has a powerful, 80W, class-AB amplifier built in.



LEARNING

For the The M-9 BTL, we have opted for learning function. The learning function means that the speaker is capable of learning the codes from your existing remote control. There are several good reasons as to why we selected the aptX, 2.4GHz wireless data transmission system for our powered and wireless speakers.

- wireless speaker with learning function

If your device supports aptX, you will not only benefit from the very good audio properties with full CD quality data transfer, you will also benefit from the unique feature that aptX connects directly to your device. On the contrary, our wireless speakers work with any Bluetooth device, even if they are not aptX compatible. Another great feature of aptX is that it also connects directly between devices. This means that the streaming data connection through your home Wi-Fi system is not congested with the audio data stream to the speakers.

The active Scansonic BTL speaker models also have two RCA/PCM wired inputs and optical TOS-link input.

For the amplifier we have chosen to work with the high performing class-AB amplifiers to ensure the best latency. To ensure better timing between channels, we have chosen to transmit the wireless data to just one speaker where the amplifier driving both channels is placed.



MB Series | Technical Specifications

SCANSONIC

MB-2.5 > Page 6-7

Size: (WxHxD)	178 x 998 x 286 mm
Weight:	15,6 kg
Freq. response:	40 Hz - 40 kHz
Impedance:	> 4 ohm
Crossover:	3.5 kHz 2. order acoustic slope 250 Hz 1.order slope
Enclosure:	Curved, heavily braced, ventilated box design with adjustable aluminum feet
Drive units:	1 sealed ribbon tweeter with kapton/aluminum sandwich membrane 2 carbon coned 4,5" bass/mid driver with overhung magnet system!
Finish:	Black-silk or White-silk
Amplification:	We recommend high quality amplifiers >50W

MB-3.5 > Page 8-9

Size: (WxHxD)	178 x 1138 x 286 mm
Weight:	20,8 kg
Freq. response:	30 Hz - 40 kHz
Impedance:	> 6 ohm
Crossover:	3.5 kHz 2. order acoustic slope 250 Hz 1.order slope
Enclosure:	Curved, heavily braced, ventilated box design with adjustable aluminum feet
Drive units:	1 sealed ribbon tweeter with kapton/aluminum sandwich membrane 2 carbon coned 4,5" bass/mid driver with overhung magnet system 2 Aluminum coned 6,5" bass drivers
Finish:	Black-silk or White-silk
Amplification:	We recommend high quality amplifiers >50W

MB-6 > Page 10-11

Size: (WxHxD)	280 x 1410 x 410 mm
Weight:	36,5 kg
Freq. response:	30 Hz - 40 kHz
Impedance:	> 4 ohm
Crossover:	3.5 kHz 2. order acoustic slope 150 Hz 1.order slope
Enclosure:	Curved, heavily braced, ventilated box design with adjustable aluminum feet
Drive units:	1 sealed ribbon tweeter with kapton/aluminum sandwich membrane 6 carbon coned 4,5" bass/mid driver with overhung magnet system!
Finish:	Black-silk or White-silk
Amplification:	We recommend high quality amplifiers >50W

MB-Center > Page 6

Size: (WxHxD)	480 x 178 x 286 mm
Weight:	10,3 kg
Freq. response:	45 Hz - 40 kHz
Impedance:	> 4 ohm
Crossover:	3.5 kHz 2. order acoustic slope 250 Hz 1. Order slope
Enclosure:	Curved, heavily braced, ventilated box design with adjustable aluminum feet
Drive units:	1 sealed ribbon tweeter with kapton/aluminum sandwich membrane! 2 carbon coned 4,5" bass/mid driver with overhung magnet system
Finish:	Black-silk or White-silk
Amplification:	We recommend high quality amplifiers >50W

MB-1 > Page 4-5

Size: (WxHxD)	178 x 312 x 286 mm
Weight:	6,1 kg
Freq. response:	50 Hz - 40 kHz
Impedance:	> 6 ohm
Crossover:	3.5 kHz 2. order acoustic slope
Enclosure:	Curved, heavily braced, ventilated box design with front loaded port
Drive units:	1 sealed ribbon tweeter with kapton/aluminum sandwich membrane! 1 carbon coned 4,5" bass/mid driver with overhung magnet system
Finish:	Black-silk or White-silk
Amplification:	We recommend high quality amplifiers >50W

M Series | Technical Specifications

M-5 > Page 12

Size: (WxHxD)	151 x 265 x 151 mm
Weight:	3,4 kg
Freq. response:	55 Hz - 30 kHz
Impedance:	> 6 ohm
Crossover:	3.5 KHz 2. order acoustic slope
Enclosure:	Heavily braced, ventilated box design with front loaded port
Drive units:	1 sealed ribbon tweeter with kapton/aluminum sandwich membrane 1 paper-polypropylene coned 4,5" bass/mid driver with underhung magnet system
Finish:	Black-piano or White-piano
Amplification:	We recommend high quality amplifiers >50W

M-6 > Page 13

Size: (WxHxD)	151 x 900 x 198 mm
Weight:	15,8 kg
Freq. response:	50 Hz - 30 kHz
Impedance:	> 4 ohm
Crossover:	3.5 KHz - 2. order acoustic slope 300 Hz - 1. order
Enclosure:	Heavily braced, ventilated box design with front loaded port
Drive units:	1 sealed ribbon tweeter with kapton/aluminum sandwich membrane 2 paper-polypropylene coned 4,5" bass/mid driver with underhung magnet system
Finish:	Black-piano or White-piano
Amplification:	We recommend high quality amplifiers >50W

M-9 > Page 14

Size: (WxHxD)	151 x 900 x 298 mm
Weight:	21,5 kg
Freq. response:	40 Hz - 30 kHz
Impedance:	> 6 ohm
Crossover:	3.5 KHz - 2. order acoustic slope 300 Hz - 1. order
Enclosure:	Heavily braced, ventilated box design with front loaded port
Drive units:	1 sealed ribbon tweeter with kapton/aluminum sandwich membrane 2 paper-polypropylene coned 4,5" bass/mid driver with underhung magnet system 1 8" woofer
Finish:	Black-piano or White-piano
Amplification:	We recommend high quality amplifiers >50W

M-8 > Page 15

Size: (WxHxD)	303 x 270 x 270 mm
Weight:	12,9 kg
Freq. response:	30 Hz - 16 kHz (adjustable)
Impedance:	> 8 ohm
Sensitivity:	190mV
Crossover:	Electronic
Enclosure:	Resonance-free MDF
Drive unit:	8" woofer
Finish:	Black-piano or White-piano
Amplifier:	100 W RMS

M-BTL Series | Technical Specifications

M-5 BTL > Page 16-17

Size: (WxHxD)	151 x 265 x 151 mm
Weight:	5,4 kg
Freq. response:	55 Hz - 30 kHz
Impedance:	> 6 ohm
Crossover:	3.5 KHz 2. order acoustic slope
Enclosure:	Heavily braced, ventilated box design with front loaded port
Drive units:	1 sealed ribbon tweeter with kapton/aluminum sandwich membrane 1 paper-polypropylene coned 4,5" bass/mid driver with underhung magnet system
Finish:	Black-piano or White-piano
Amplification:	50 W Class A-B
Inputs:	Wireless: 2.4GHz aptX Optical: Toslink optical inputs Wired: 2 RCA PCM inputs
Remote-control:	Learning function

M-6 BTL > Page 18-19

Size: (WxHxD)	151 x 900 x 198 mm
Weight:	17,8 kg
Freq. response:	50 Hz - 30 kHz
Impedance:	> 4 ohm
Crossover:	3.5 KHz - 2. order acoustic slope 300 Hz - 1. order
Enclosure:	Heavily braced, ventilated box design with front loaded port
Drive units:	1 sealed ribbon tweeter with kapton/aluminum sandwich membrane 2 paper-polypropylene coned 4,5" bass/mid driver with underhung magnet system
Finish:	Black-piano or White-piano
Amplification:	60 W Class A-B
Inputs:	Wireless: 2.4GHz aptX Optical: Toslink optical inputs Wired: 2 RCA PCM inputs
Remote-control:	Learning function

M-9 BTL > Page 20-21

Size: (WxHxD)	151 x 900 x 298 mm
Weight:	23,6 kg
Freq. response:	40 Hz - 30 kHz
Impedance:	> 6 ohm
Crossover:	3.5 KHz - 2. order acoustic slope 300 Hz - 1. order
Enclosure:	Heavily braced, ventilated box design with front loaded port
Drive units:	1 sealed ribbon tweeter with kapton/aluminum sandwich membrane 2 paper-polypropylene coned 4,5" bass/mid driver with underhung magnet system 1 8" woofer
Finish:	Black-piano or White-piano
Amplification:	80 W Class A-B
Inputs:	Wireless: 2.4GHz aptX Optical: Toslink optical inputs Wired: 2 RCA PCM inputs
Remote-control:	Learning function